

The Information provided is for reference only; please consult with your LASER practitioner if you require medical advice regarding treatment.

## PROCEDURE INFORMATION

### ALMA BODY CONTOURING & CELLULITE REDUCTION

#### WHAT IS BODY CONTOURING/CELLULITE REDUCTION?

The ALMA platform breaks down fat, tightens the skin and reduces cellulite on the body. Radio Frequency (RF) is utilised to non-invasively treat wrinkles, rhytids and the temporary reduction in the appearance of cellulite that is virtually painless.

#### HOW DOES THE TREATMENT WORK?

Two proprietary radio frequency modes BiPolar and UniPolar, using separate handpieces to provide therapeutic heat at different tissue depths within the body. Radio Frequency have been proven in clinical studies to improve skin texture and laxity.

Alma skin tightening lasers works by creating a controlled volume of heated tissue in the dermis. As the collagen is heated, it denatures, and the fibrils contract and thicken. In the months following treatment, the body's natural wound-healing processes result in the generation of new collagen and dermal remodeling. As new, "younger" structured collagen is laid down, the skin looks tighter, firmer and more youthful.

#### WHAT HAPPENS DURING TREATMENT?

During the consultation, your laser therapist will carefully examine your skin to determine which technique, or combination of treatments will provide you with the best results. Your skin type, the severity of any loose skin will be evaluated and a recommended number of treatments will be advised.

4-6 treatments are normally recommended with Intervals between treatments usually 4 weekly.

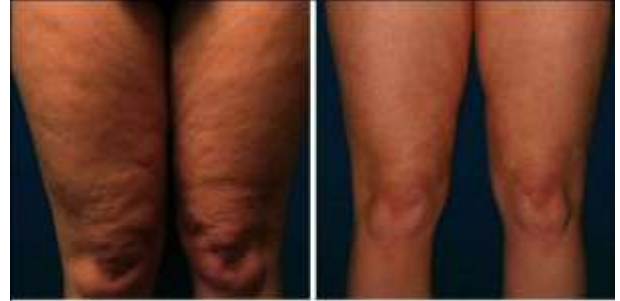


The treatment area is cleaned. A baseline temperature will be taken.

Cooling gel/mineral oil may be applied throughout the treatment. The tip will be in contact with the skin at all times until the desired energy output is delivered. You will feel an increase in heat in the treated area. Your practitioner will be communicating with you at all times to ensure the treatment is as comfortable as possible.

BEFORE

AFTER



Cellulite Treatment

BEFORE

AFTER



Body Contouring Treatment

#### HOW LONG DOES TREATMENT TAKE?

Treatment time depends on many factors and size of treatment area, but can take less than 30 minutes. If your condition is advanced, your treatment may take longer.

#### WHAT WILL MY SKIN LOOK LIKE AFTER TREATMENT?

The procedure is completely non-invasive and has zero downtime. You can have the treatment during your lunch break and go back to your normal routine with a new and improved look.

Collagen production takes 6-8 weeks to be produced, so results are gradual.

#### DOES IT HURT?

In most cases, you may feel a slight warming and pressure.

#### ARE THERE ANY SPECIAL PRE-TREATMENT INSTRUCTIONS?

Avoid strenuous exercise directly before treatment as this may increase your baseline temperature. Drink 1-2 litres of water prior to treatment.

The Information provided is for reference only; please consult with your LASER practitioner if you require medical advice regarding treatment.

Avoid excessive food intake 3 hours before treatment.

#### WHAT ARE THE POSSIBLE SIDE EFFECTS?

Discomfort/burning/bruising/swelling/pigmentation/scarring/blistering.

#### AFTERCARE INSTRUCTIONS

Only wash with cold or tepid water for the first day after the skin tightening treatment while your skin is in the recovery stage.

Be gentle on your skin for the first 48 hours and avoid the use of strongly scented lotions or soaps, exfoliating creams and aggressive scrubbing to the treated area as this may cause you slight discomfort.

Any redness will gradually subside over the next 24-48 hours. In some cases it lasts up to 72 hours.

Apply VAGHEGGI PEOPLE CELLULITE OIL. Gently massage in a small amount daily after cellulite treatment.

#### VAGHEGGI PEOPLE LINE CELLULITE CONCENTRATE & CELLULITE CARRIER OIL PACKAGE 600ML

##### People Europe – Soothing/toning for intolerant skins.

It works on relaxed, stressed and intolerant skins with soothing, anti-oxidant and toning action.

Active ingredients: biological extracts of Cranberry oil (anti-oxidant).

##### People Asia - Concentrate for early signs of cellulite

It has a draining, regenerating and toning action.

Active ingredients: biological extracts of Tamanu Nut oil (reduce inflammation), Forskohlii Root (stimulates blood vessels), and Commiphora Mukul (circulatory stimulant).

##### People Africa - Concentrate for advanced signs of cellulite

As above, with a higher concentrate of active ingredients

The PEOPLE cellulite concentrate £86 & carrier body oil £86. PACKAGE can be purchased together

(RRP £172.00)